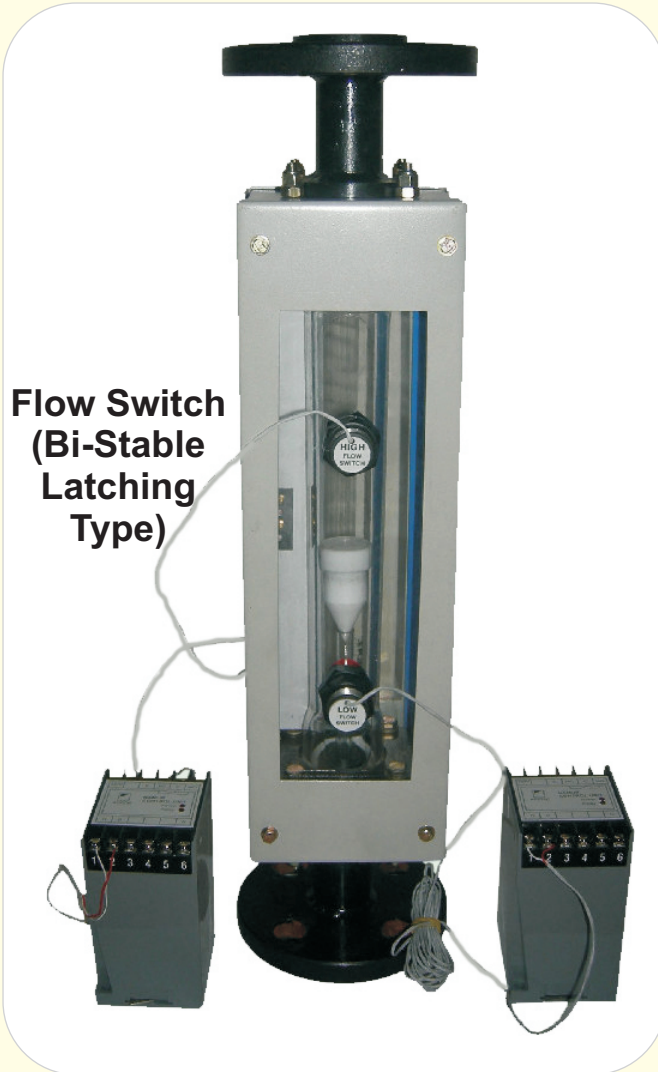




# Flow-Switch

For Glass Tube Rotameter

## Glass Tube Rotameter



Switching Amplifire

## Bi-Stable (Latching Type) Switch



Tansa Switch can be also used wherever Bi-stable conditions are to be sensed. The switch operates and remains in a operated condition till it receives signal from the object (Latching)



## Tansa Equipments Pvt. Ltd.

Unit No. 35/36/41, Om Anand Industrial estate, M. S. Road, Raghunath Nagar, Thane - 400604 ( Maharashtra ) India.  
Tel. : 2583 2323 , 65720669 Fax : 2582 3708,  
E-mail : tansaindia@gmail.com / tansa@mtnl.net.in / sales@tansa.co.in  
Website : www.tansa.co.in, www.rotameters.co.in, www.orificeplate.in, www.flowmetersindia.com

We also manufacture Metal Tube, Purge type, Acrylic body, by - Pass Rotameters & Orifice Assy.

● Due to continuous development specifications are subject to change without prior notice.

CAT No. - GTR -SW-1-010422

\*See overleaf for details





# Flow-Switch

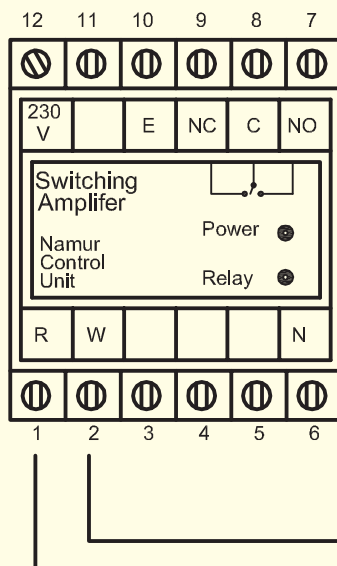
For Glass Tube Rotameter

Glass Tube Rotameter with switches

## Operation

	High switch	Low switch	Operation
	Open	Closed	With increasing flow when the float passes up in front of the switch, the switch becomes open. (Break to alarm) Even if the float goes up beyond the level, the switch remains open, i.e. it latches off. Unless the float comes down and goes below the level, the switch will not turn on. Thus, the switch is Bi-Stable with stable states.
	Open	Closed	The switch operates by sensing the direction of the float travel. For the high limit switch when the float is below the high limit, the switch remains on, indicating normal condition.
	Closed	Open	For the low switch similar action happens with the switch remaining off when the float is above the low flow limit, and turning on when the float goes below the low limit.

## Wiring Diagram

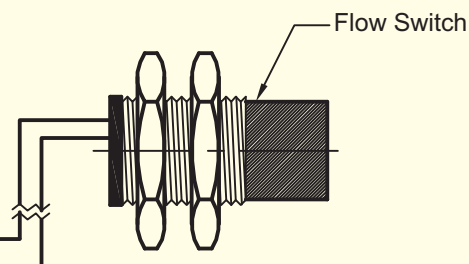


## Technical Specification

Connection - Two wire teflon cable. Length 2 MTR

Contact BiStable  
Enclosure Class Ip65  
MAX. Voltage 24Vdc  
MAX. Current 100mA

To be used with switching amplifier as shown in wiring diagram Which has namur input (8V/8mA MAX.) or with PLC / DCS inputs.



## Tansa Equipments Pvt. Ltd.

Unit No. 35/36/41, Om Anand Industrial estate, M. S. Road, Raghunath Nagar, Thane - 400604 ( Maharashtra ) India.  
Tel. : 2583 2323 , 65720669 Fax : 2582 3708,  
E-mail : tansaindia@gmail.com / tansa@mtnl.net.in / sales@tansa.co.in  
Website : www.tansa.co.in, www.rotameters.co.in, www.orificeplate.in, www.flowmetersindia.com



We also manufacture Metal Tube, Purge type, Acrylic body, by - Pass Rotameters & Orifice Assy.

● Due to continuous development specifications are subject to change without prior notice.

CAT No. - GTR-SW-1-010412